

80mm Series Thermal Receipt Printer -Instruction Manual

Safety Precautions

This section presents important information intended to ensure safe and effective use of this printer.

WARNING:

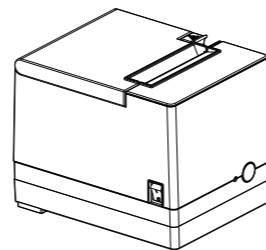
- ▲ **Scratch Warning:** Never try to touch the auto cutter or jagged teeth.
- ▲ **Scald Warning:** To avoid been burned, please do not touch the printer head .
- ▲ **Shock Warning:** Please cut off the power before you Plug/ Unplug the power cable from the printer.

Cautions:

- 1) Please apply the power adapter to a stable voltage (110-220V), please do not use other devices on the same power outlet to avoid voltage fluctuation.
- 2) Install the printer on a flat and stable surface to avoid printer suffered from any vibration and shocks.
- 3) Disconnect the power cord if the printer is idle for a long time.
- 4) Please ensure the switch button is “off” before you plug the power cord.
- 5) Please strictly follow the recommended use tips of this manual.

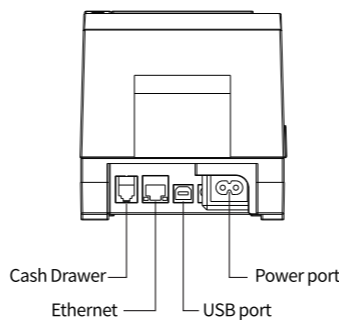
Fast Installation Guide

Product View:



Printer connection:

- a. Connect adaptor power core to the power socket.
- b. Connect interface cable into ports in the back.
- c. Connect cash drawer to the cash drawer port.

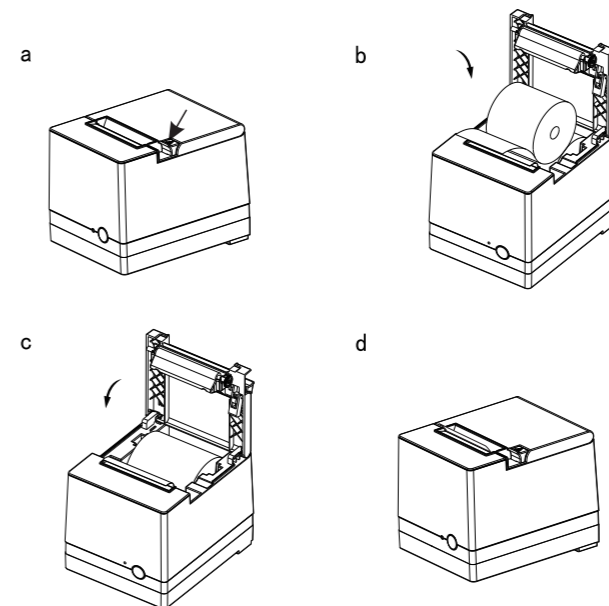


Note:

The transmission interface, appearance of the printer in the picture will vary according to the type of model you purchased. For the actual transmission interface and appearance please refer to the material object.

Install the paper roll

- a. Press the button to open the top cover.
- b. Install the paper roll into the printer.
- c. Pull out some paper outside the printer
- d. Close the top cover



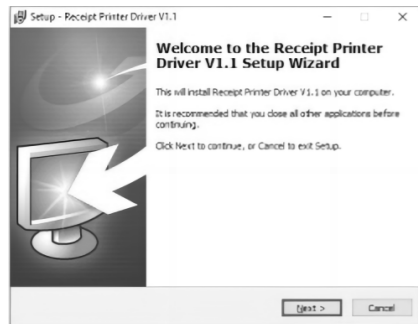
- Specifications, accessories, parts and procedures are subject to the actual machine, subject to change without prior notice.

Technical Parameters

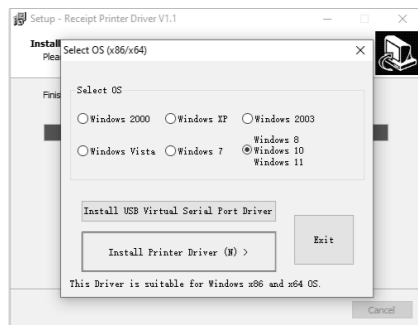
Print method	Direct thermal Line	
Print head resolution	203dpi	
Print speed	200mm/s	
Print width	72mm(max)	
Print Command	Compatible with ESC/POS	
Interface	Standard	USB+LAN
	Optional	USB
Character Size	ANK Font; Font A: 12×24dots; Font B: 9×17dots Chinese Character: 24×24dots	
Barcode mode	UPC-A/UPC-E/JAN13(EAN13)/JAN8(EAN8)/ITF/CODABAR/ CODE39/CODE93/CODE128/QR CODE	
Character set	Chinese(GB18030)/Alphanumeric	
Reliability	Mechanism: 150km; Auto Cutter: 1.5 million cuts	
Paper thickness	0.06~0.08mm	
Auto cutter	Portal cutter	
Power supply	DC 24V/1.25A	
Cashdrawer out	DC 24V/0.5A	
Work environment	Temperature : 5°C~40°C, Humidity : 20%~90%	
Storage environment	Temperature : -25°C~55°C, Humidity : 20%~93%	

Driver Installation

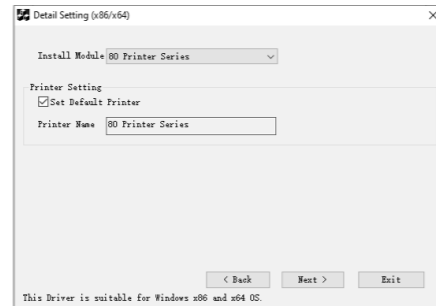
a. Double click on the downloaded printer driver, run the program, and then click "Next";



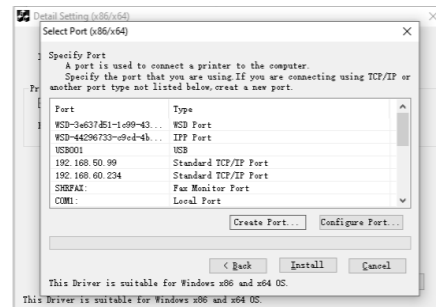
b. Select the corresponding operating system and install the printer driver;



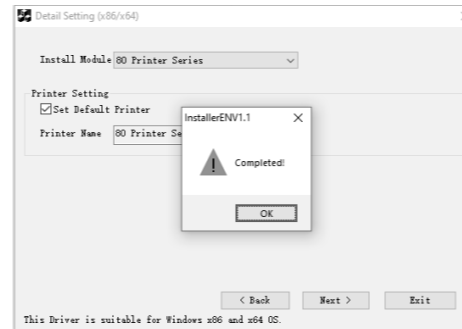
c. Select "80 Printer Series" in the Install module, and then click "Next";



d. Select the appropriate printer port and click "Install";



e. Click "OK" to complete the installation of the driver.



General Troubleshooting

1: Self test page is ok, but printer does not work after driver installation.

A: Recheck the installation according to above installation steps and see if we selected the right port or not.

2: Cash drawer does not open?

A: Please enable the cash drawer function from device settings of printer driver.

3: Malfunction of the indicator light.

A: Check the cable connecting way / adapter / power cord / switch on or off? Or contact the service center for repair.

4: Ethernet printer does not print after linked with a router.

A: Make sure the network cable and router port works well, does the printer IP and router IP are on the same network segment? Is the printer IP occupied by other device? We can modify the IP with the printer tools attached in the CD disc. Or contact our service center for help.

5: Messy code printing except Arabic numeral printing.

A: Language switching incorrectly, please use the printer tools attached in the CD disc. Then change the language to "ASCII".

6: Malfunction of the auto paper cutting.

A: If the cutter doesn't work, please check the printer tools -Function Set - Cutter Set, and make sure the option is ON. Or contact the service center for help.

7: Red indicator keep flashing during the printing.

A: Usually it is due to the high temperature of the print head. Just close printer for a while and let it cold down. Or contact the service center for help.

8: Communication interrupts and can not print if many printers work by Ethernet port at the same time.

A: First check the network to get the printer Ethernet ID, to see if any conflicts of the Ethernet ID. Give a specified Ethernet ID to each printer to avoid this problem.